

338500

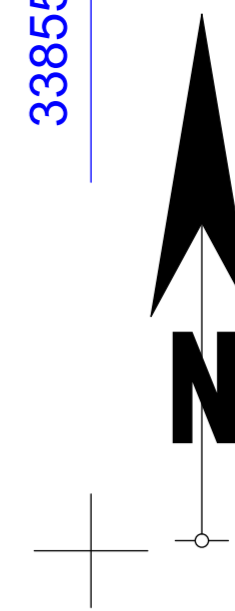
338550

# P.U.Z. LOCUINTA FAMILIALA SI IMPREJMUIRE

zona str. Sadoveanu, nr. FN, mun. Deva, jud. Hunedoara

## U-01 SITUATIA EXISTENTA

486300



486300

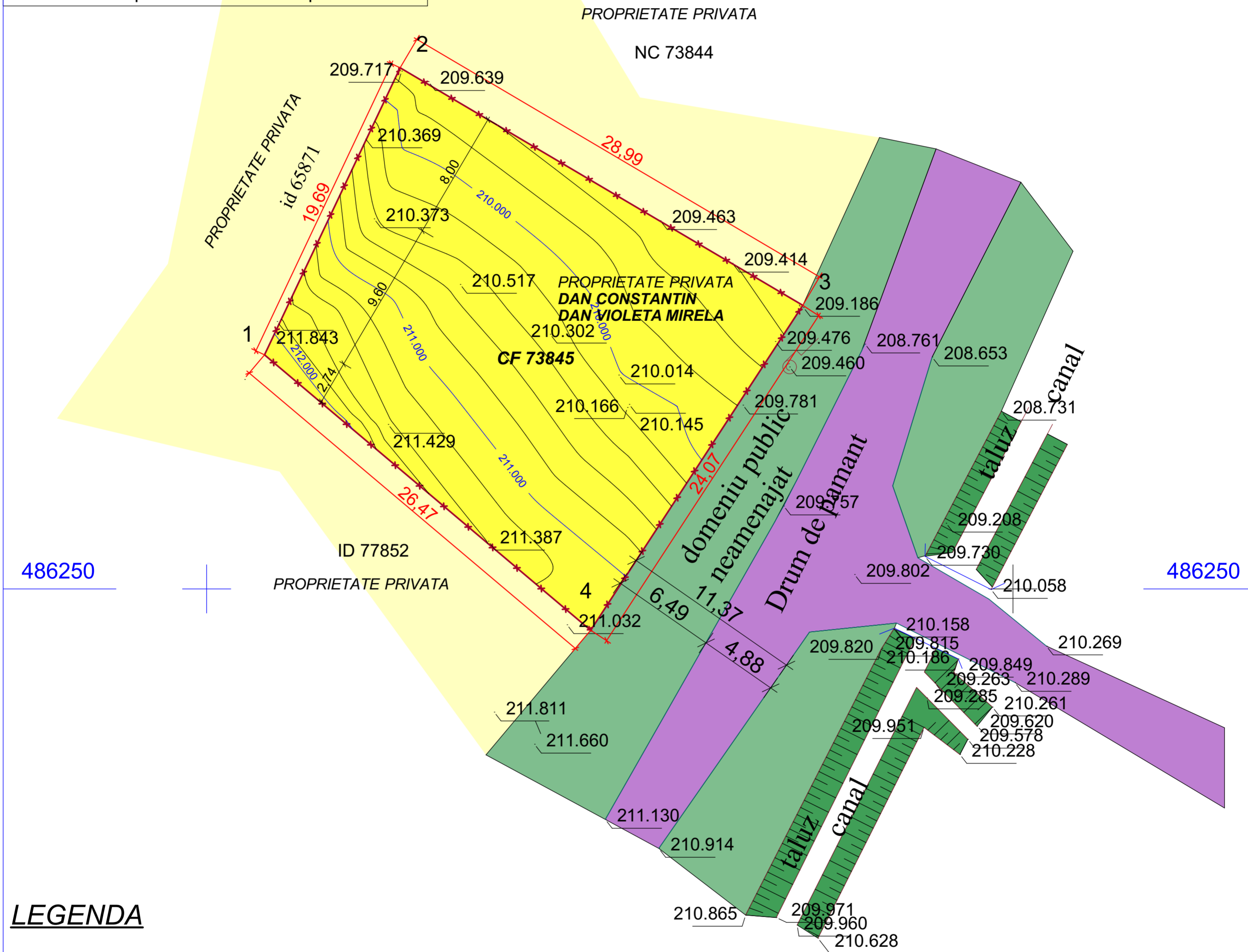
### INVENTAR DE COORDONATE NC 73845

Sistem de proiectie: stereografic 1970

Pct.	E(m)	N(m)
1	338503.589	486264.520
2	338511.997	486282.327
3	338536.965	486267.592
4	338523.812	486247.435

Suprafata totala masurata=600mp

Suprafata din act=600mp



486250

486250

### LEGENDA

	Teren arabil intravilan
	Drum de acces - pamant
	Domeniu public neamenajat
	Taluz
	Limita proprietate CF 73845

338500

338550

Coordonator	Nume	Semnatura	Cerinta	Referat / Expertiza . Nr. / Data	
	<b>BA</b> POP Oliviu Marius srl	<b>Birou de Arhitectura</b> POP OLIVIU MARIUS S.R.L. C.U.I. 35124257, J20/912/2015			Denumire proiect
				LOCUINTA FAMILIALA SI IMPREJMUIRE MUN. DEVA, ZONA STR. SADOVEANU, NR. FN, JUD. HD.	404/2022
	Specificatie	Nume	Semnatura	Scara	Beneficiar
	Sef proiect	arh. Pop Oliviu		1:200	DAN Constantin DAN Violeta Mirela
	Proiectat	arh. Pop Oliviu		Data	Denumire plansa
	Sef pr.Arh.	arh. Pop Oliviu		05.2022	SITUATIA EXISTENTA
					Faza O.P.
					Plansa A-02